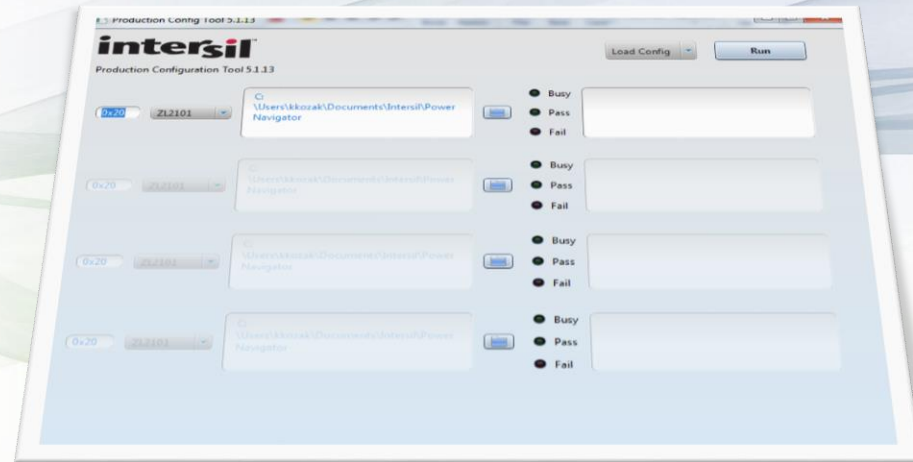


Production Configuration Utility

Version 1.0.10

USER GUIDE



PCT Overview

- **What is PCT?**

- Production configuration tool for quick loading and verification of configuration files into Intersil Digital Power controller/modules.

- **Features**

- Program or verify configuration for multiple devices at the same time
- Supports all devices supported by PowerNavigator
- Data logging to error.txt file

- **Both standard Configuration files and production HEX files can be used**

- PCT will load and verify either format

PCT 1.0.10 – Supported Devices

- **Integrated FET Digital Regulators: ZL2101, ZL2102**
- **Digital Controllers: ZL6105, ZL8101, ZL8800, ZL8801**
- **Digital Multiphase: ISL6388, ISL6398**
- **Digital Modules: ZL9006M, ZL9010M, ZL9101M, ZL9117M, ISL8270M, ISL8271M, ISL8272M**

Instructions

- **Installation**

- Double-click “configCheckSetup.exe” and follow instructions
- Installer will place icon on Desktop and inside Start Menu

- **Running**

- Connect ZLUSBEVAL3Z dongle to computer and power system’s PMBus header
- Ensure input voltage is provided to all devices to be programmed.

Device Selection Screen

The screenshot displays the 'Production Config Tool 1.0.10' window. It features a menu bar with 'File', the 'intersil' logo, and the text 'Production Configuration Tool 1.0.10'. On the right side, there are 'Load Config' and 'Run' buttons. The main area contains four rows of device configuration options. Each row includes a PMBus address (0x28, 0x20, 0x2A, 0x32), a device type (ZL8801, ZL2102, ISL8272M, ZL8800), a file browser icon, a file path (C:\Users\USERNAME\Documents\Intersil\PowerNavigator), and a status indicator (Busy, Pass, Fail) next to a large empty text box. Red arrows point to the PMBus address field, the device type dropdown, and the file browser icon.

File

intersil™
Production Configuration Tool 1.0.10

Load Config Run

Select device type

Set Device PMBus address

0x28 ZL8801 C:\Users\USERNAME\Documents\Intersil\PowerNavigator

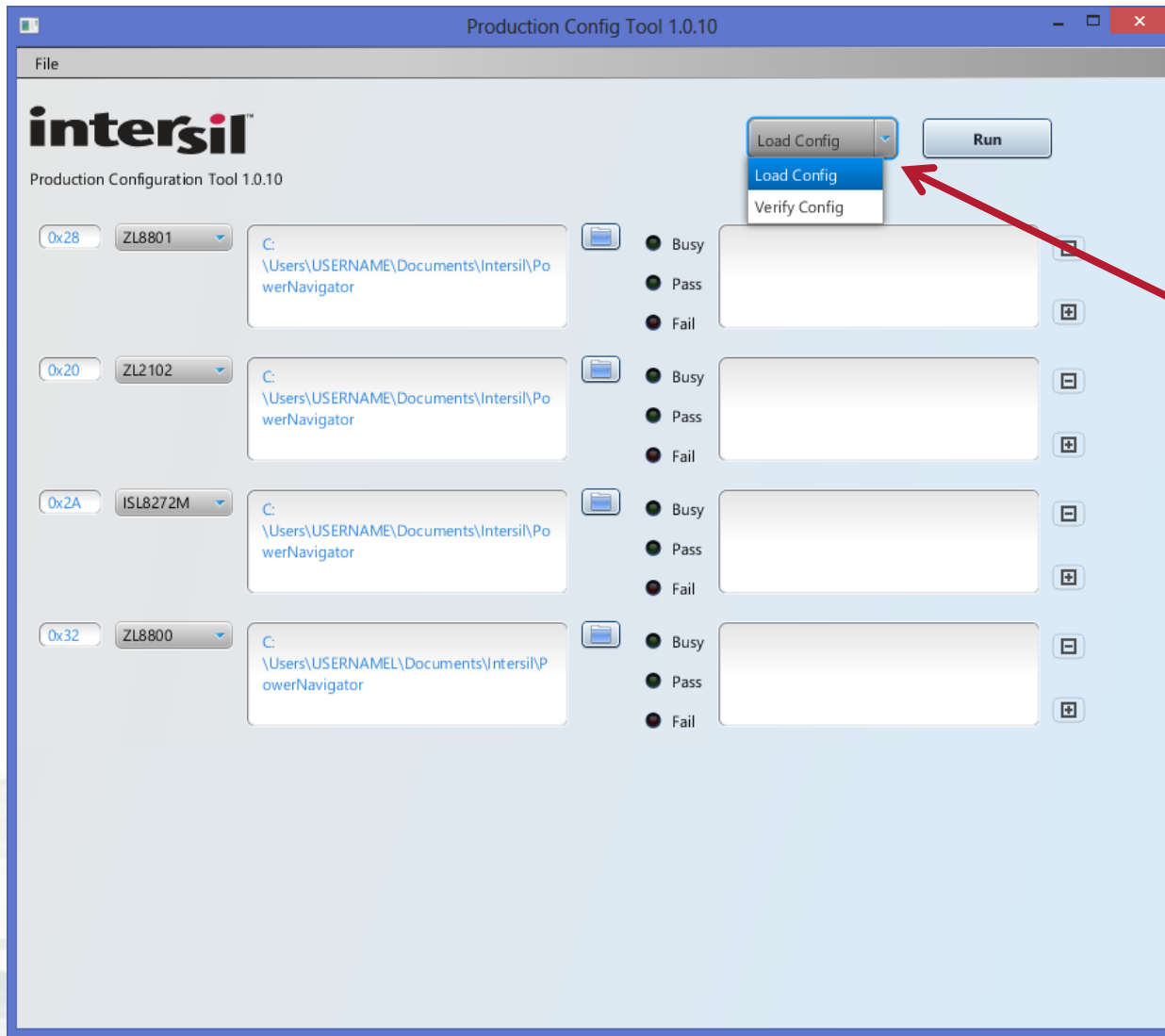
0x20 ZL2102 C:\Users\USERNAME\Documents\Intersil\PowerNavigator

0x2A ISL8272M C:\Users\USERNAME\Documents\Intersil\PowerNavigator

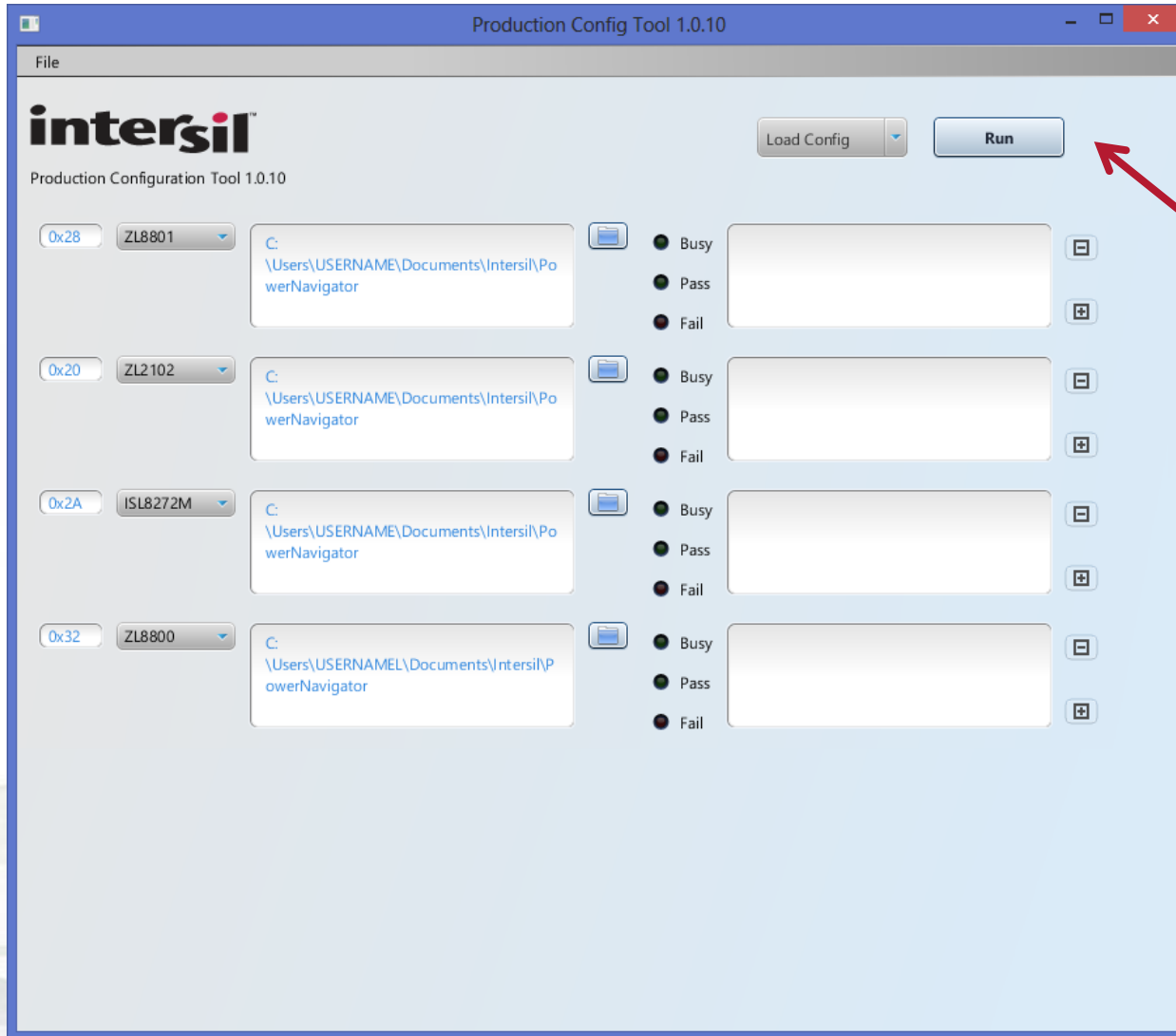
0x32 ZL8800 C:\Users\USERNAME\Documents\Intersil\PowerNavigator

Navigate to configuration file to be loaded

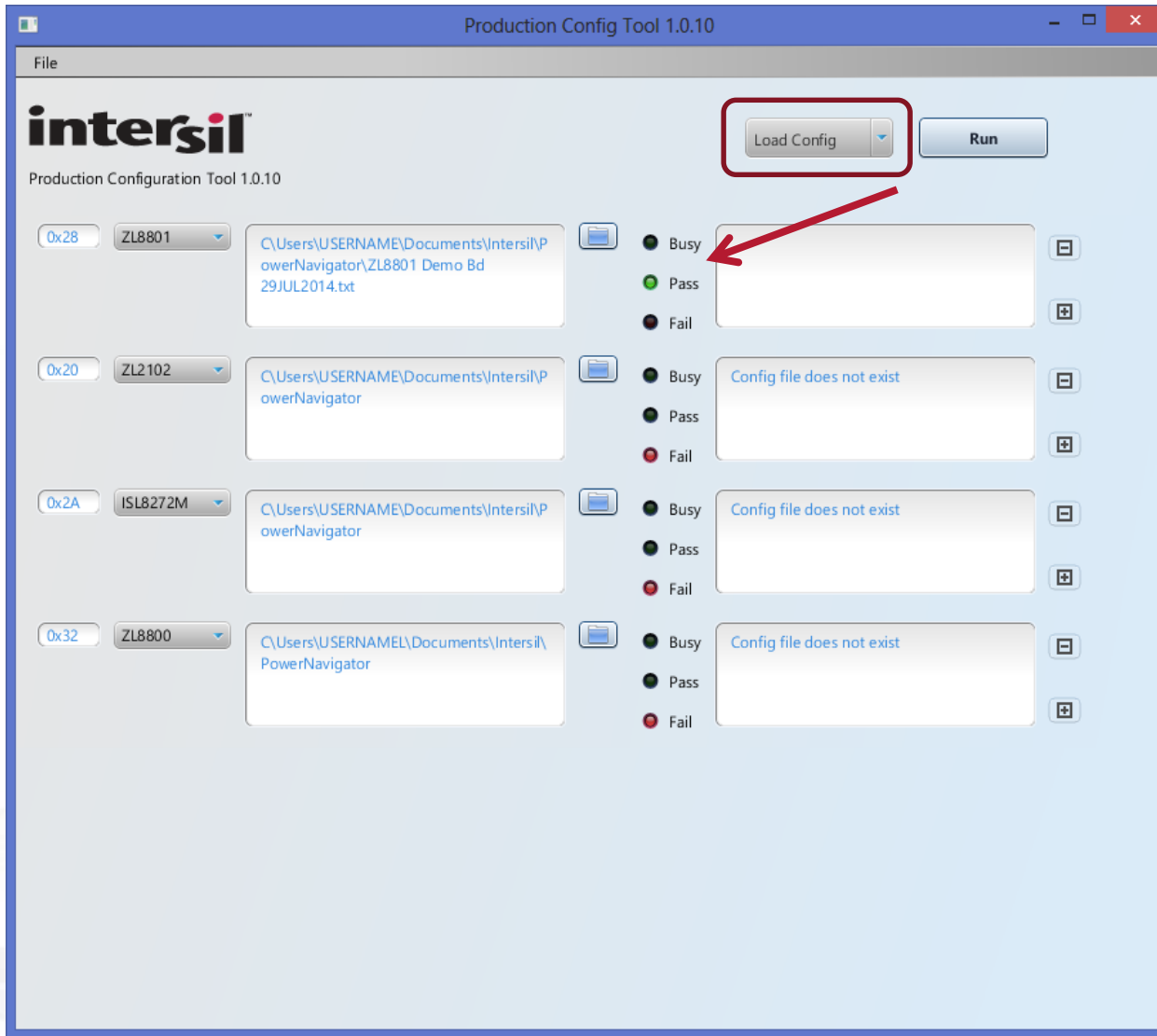
Modes: Load config file to device or Verify existing device against a config file



Press “Run” to start load or verify process.
Status lights show pass/fail results



Configuration File Load



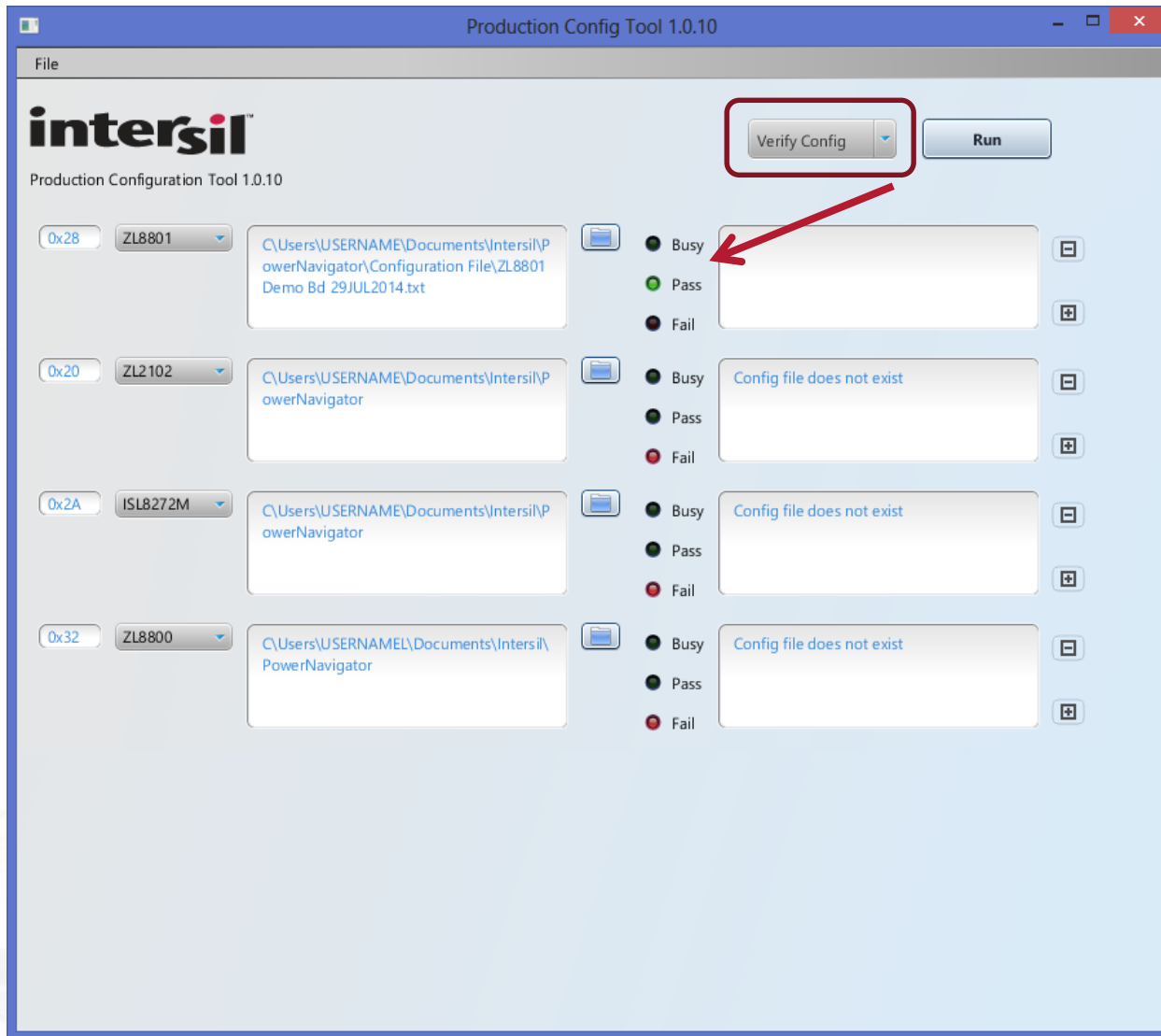
Successful Config Load

Unsuccessful Config Load

Unsuccessful Config Load

Unsuccessful Config Load

Configuration File Verify



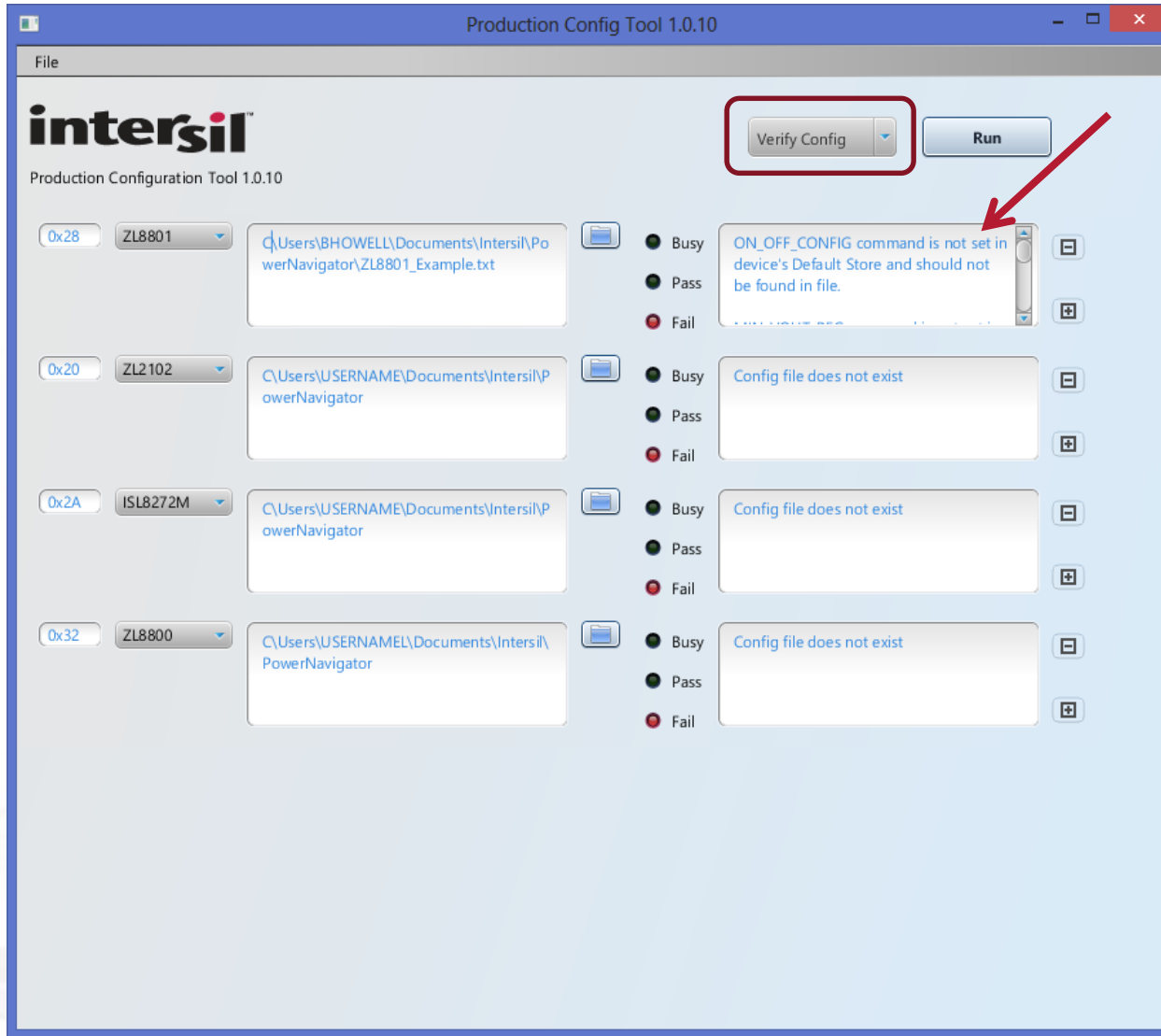
Successful Config Verify

Unsuccessful Config Verify

Unsuccessful Config Verify

Unsuccessful Config Verify

Configuration File Verify



Unsuccessful Config Verify

Mismatches between device store and configuration file are listed.

Adding additional Rows

The screenshot shows the 'Production Config Tool 1.0.10' window. It features a menu bar with 'File', a toolbar with 'Load Config' and 'Run' buttons, and the Intersil logo. Below the logo, it says 'Production Configuration Tool 1.0.10'. The main area contains a list of four device configurations. Each configuration row includes a device ID (e.g., 0x28, 0x20, 0x2A, 0x32), a device name (e.g., ZL8801, ZL2102, ISL8272M, ZL8800), a file path, and status indicators for Busy, Pass, and Fail. A red arrow points to a plus icon in the bottom right corner of the configuration list, which is used to add new rows.

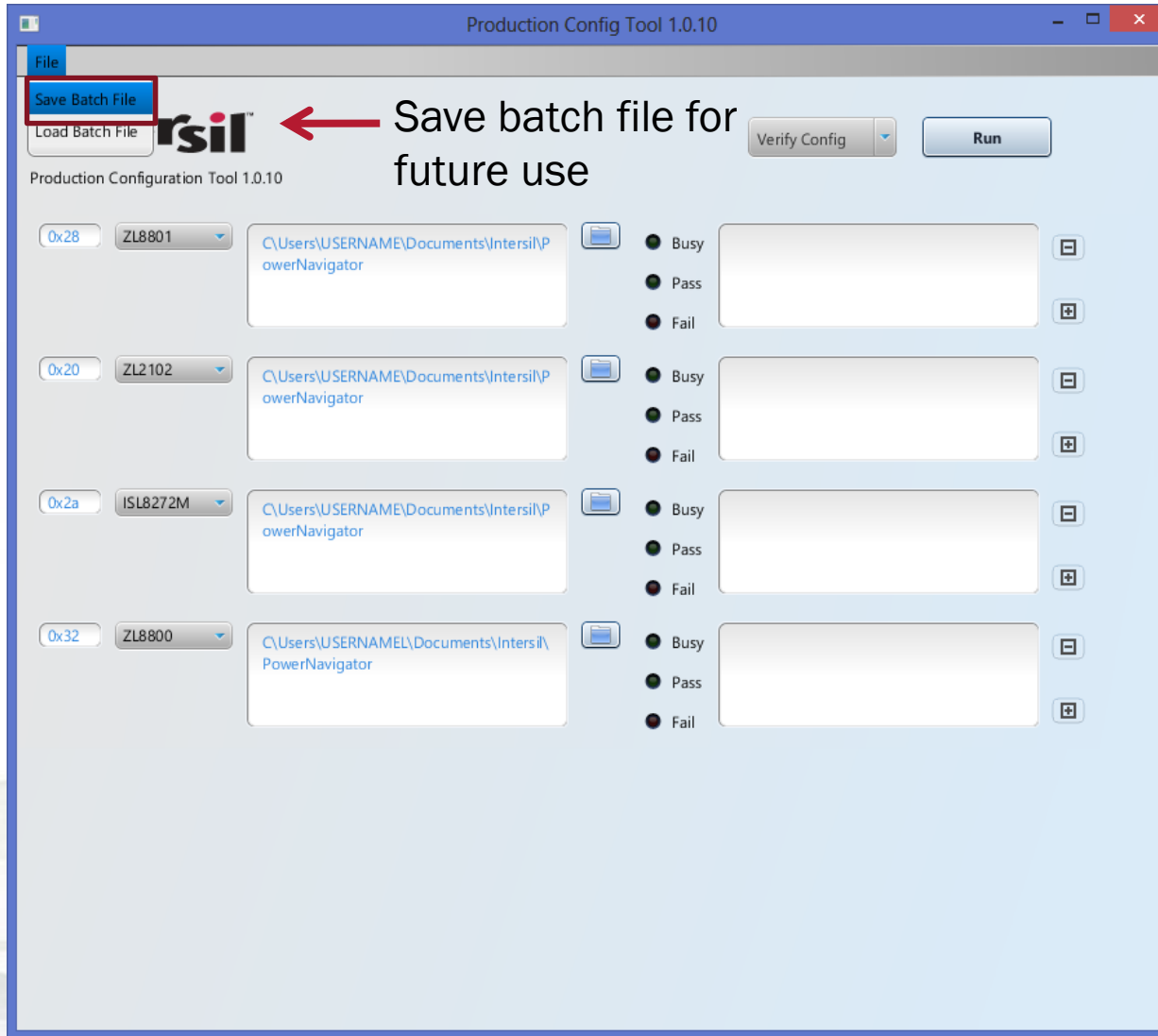
Device ID	Device Name	File Path	Busy	Pass	Fail
0x28	ZL8801	C:\Users\USERNAME\Documents\Intersil\PowerNavigator	<input type="checkbox"/>	<input type="checkbox"/>	<input type="checkbox"/>
0x20	ZL2102	C:\Users\USERNAME\Documents\Intersil\PowerNavigator	<input type="checkbox"/>	<input type="checkbox"/>	<input type="checkbox"/>
0x2A	ISL8272M	C:\Users\USERNAME\Documents\Intersil\PowerNavigator	<input type="checkbox"/>	<input type="checkbox"/>	<input type="checkbox"/>
0x32	ZL8800	C:\Users\USERNAME\Documents\Intersil\PowerNavigator	<input type="checkbox"/>	<input type="checkbox"/>	<input type="checkbox"/>

Click to add rows to program additional devices

PCT – Batch Files

- **PCT allows users to create “Batch Files”, saving PCT configuration for future use**
 - Save address and device types
 - Automatically points to saved configuration files
 - Individual Batch files can be saved on a per board basis.

Saving Batch files for future use



intersilTM

www.intersil.com